



OUR EXPERIENCES AND PRODUCTION PROCESS

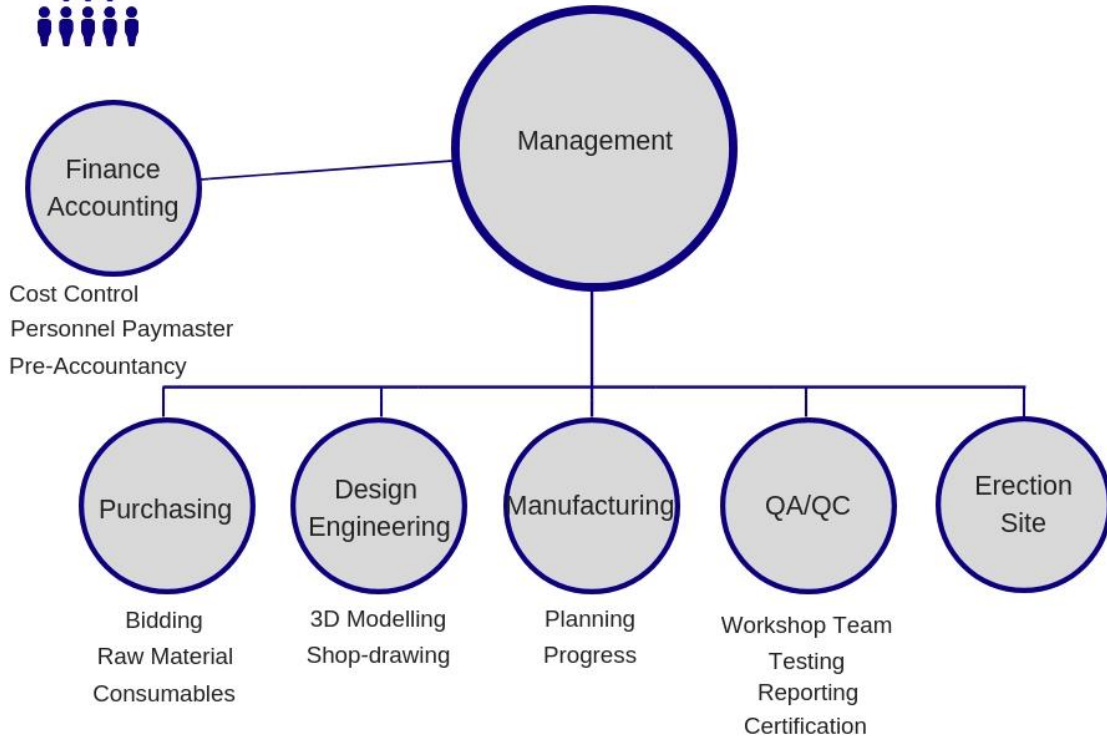
About Us;

Since 1995, DORALP has been reliably providing services with 100% traceability on domestic and foreign customers' heavy steel structure works in

- the design of connection details,
- preparation of essential shop and erection drawings,
- material supply,
- manufacturing,
- quality control,
- packaging,
- shipment,
- erection on-site.



ORGANIZATION CHART



DILOVASI FACTORY, 20000 m²

Monthly capacity with single shift 1000-1500 ton,
Secondary Steel Structural (around 300 to 500 ton/m with
single shift)



15000 m² closed area

Material income area (1350 m²)

Sandblasting & Shop-primer area
(360 m²)

Production area (6500 m²),

Cleaning&Manuel Sandblasting
(950 m²),

Painting&Packaging (1650 m²)

GEOGRAPHIES, Completed Projects



INDUSTRY SPECIALIZATION

SEGMENTS

FACILITIES

MAJOR PROJECTS

OIL & GAS

Refinery, Petro Chemical
Plants, Fertilizer Plants

POLIMERSAN POLIMER CHEMICAL INC – GAZI METAL A.Ş. KARASU – KÖKSAN A.Ş. PET-RESIN
PLANTS – TEKFEN A.Ş. TÜPRAŞ RUP PROJECT – META NIKEL A.Ş. NIKEL MINE PLANT –
ILKCONSTRUCTION INC. TANK FARM PROJECT – TEZCAN GALVANIZE PLANT –
GAP A.Ş. GARABOGAZ FERTILIZER PLANT
VOLGA INT. RONESANS – GAS TO GASOLINE

POWER &
ENERGY

Combined Cycle Power
Plants, Coal Fired Power
Plants

ENKA A.Ş. SULEYMANIYAH CCPP (IRAQ) - BAZIAN CCPP (IRAQ)
POWER PROJECTS OMV SAMSUN 880MW CCPP (TURKEY) OMV
ENERJISA A.Ş. BANDIRMA 919 MW CCPP (TURKEY)
AKSA ENERJİ A.Ş. ANTALYA CCPP / CYPRUS CCPP / BOLU-GÖYÜNÜK THERMAL PP

TRANSPORT
STRUCTURES

Railway Facilities, Bridges,
Ports, Airports

ÇİMTAŞ A.Ş. MARKAT/JORDAN AIRPORT
HYUNDAI SK ENGINEERING JV – 3RD BRIDGE OF ISTANBUL
ENG METAL YAPI A.Ş. – DUBLIN AIRPORT
ENG METAL YAPI A.Ş. – GARE DE MONS BELGIUM
YAPI MERKEZİ A.Ş. – SETIF TRAM ALGERIA – TEL DAKAR SENEGAL RAILWAY

BUILDINGS

Commercial Building,
Stadium, Shopping Malls,
others

ÇİMTAŞ A.Ş. - SHAKTAR DONESK STADIUM
FERKO A.Ş. - MMC GROSMARKET
ILKCONSTRUCTION INC. – TURKMENISTAN SPORTS CENTER
ÇİMTAŞ A.Ş. – GABON CONFERENCE CENTER

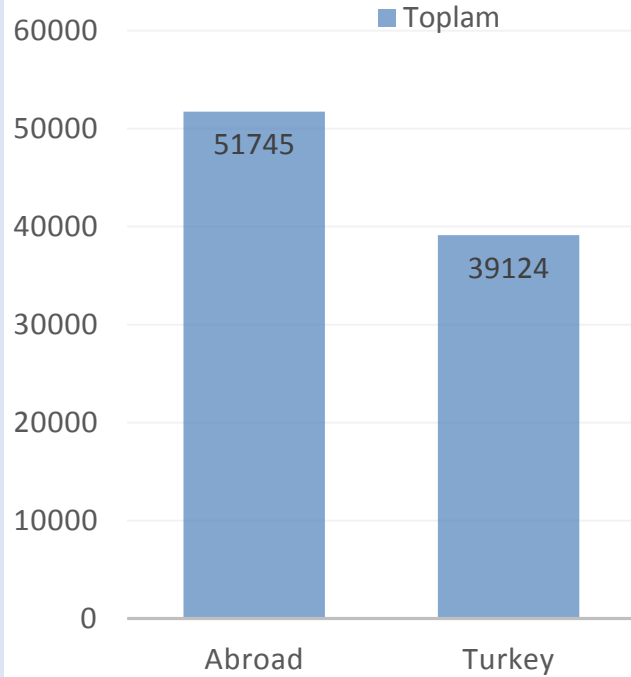
INDUSTRIAL
PLANTS

Factories, Warehouses,
PEB Buildings etc.

ASSAN YAPI A.Ş. – RZK - BARSAN GLOBAL LOGISTIC A.Ş. – EKOL LOGISTIC A.Ş. – AĞIR
HADDEÇİLİK

AMOUNT OF **PROJECTS**

in tonnes done
on last **7** years



AKSA BOLU GÖYNÜK THERMAL POWER PLANT

Customer: AKSA A.Ş.

YEAR : 2013-2014,

6135 tons

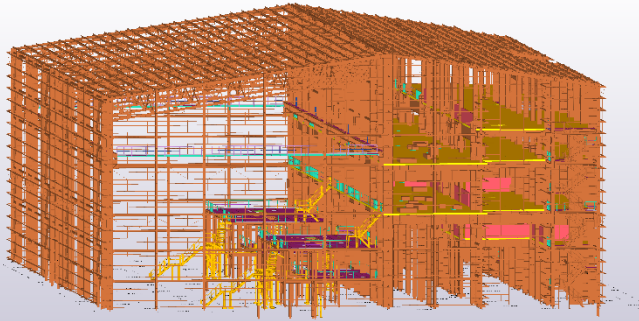
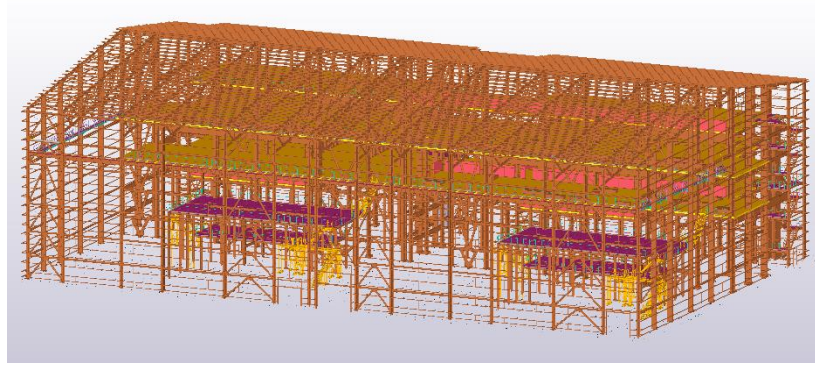


AKSA BOLU GÖYNÜK THERMAL POWER PLANT

Customer: AKSA A.Ş.

YEAR : 2013-2014,

6135 tons



SHAKTAR DONEKST STADIUM UKRAINE

Customer: ENKA A.Ş.

YEAR : 2007, 6135 tons



photo by kenan saracoglu

KÖKSAN PET RESIN
GAZİANTEP-TURKEY

Customer: KÖKSAN A.Ş.
YEAR : 2013, 4055 tons



KÖKSAN PET RESIN GAZİANTEP-TURKEY

Customer: KÖKSAN A.Ş.
YEAR : 2013, 4055 tons



META CHROME NIKEL MINE PLANT MANİSA-TURKEY

Customer: Teknokon A.Ş.
YEAR : 2013, 2750 tons



META CHROME NIKEL MINE PLANT MANİSA-TURKEY

Customer: Teknokon A.Ş.
YEAR : 2013, 2750 tons



ENERJISA 919 MW CCPP
BANDIRMA-TURKEY

Customer: Kalemci A.Ş.
YEAR : 2013, 2750 tons



REKA OIL PLANT TEKİRDAĞ-TURKEY

YEAR : 2012, 3750 tons



REKA OIL PLANT
TEKİRDAĞ-TURKEY

YEAR : 2012, 3750 tons



RZK STEEL SERVICES
3 facilities
DILOVASI-TURKEY

Customer: RZK
YEAR : 2013-14,

6210 tons



OMV 880 MW CCPP
SAMSUN-TURKEY

Customer: POWER PROJECTS
YEAR : 2011, 5500 tons



3RD BRIDGE OF BOSPHORUS ISTANBUL-TURKEY

Customer: HYUNDAI & SK JV
YEAR : 2014, 1250 tons



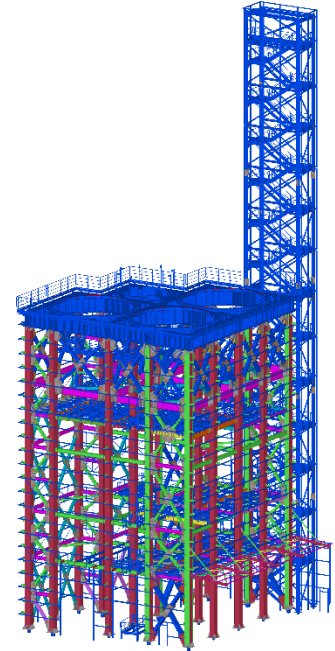
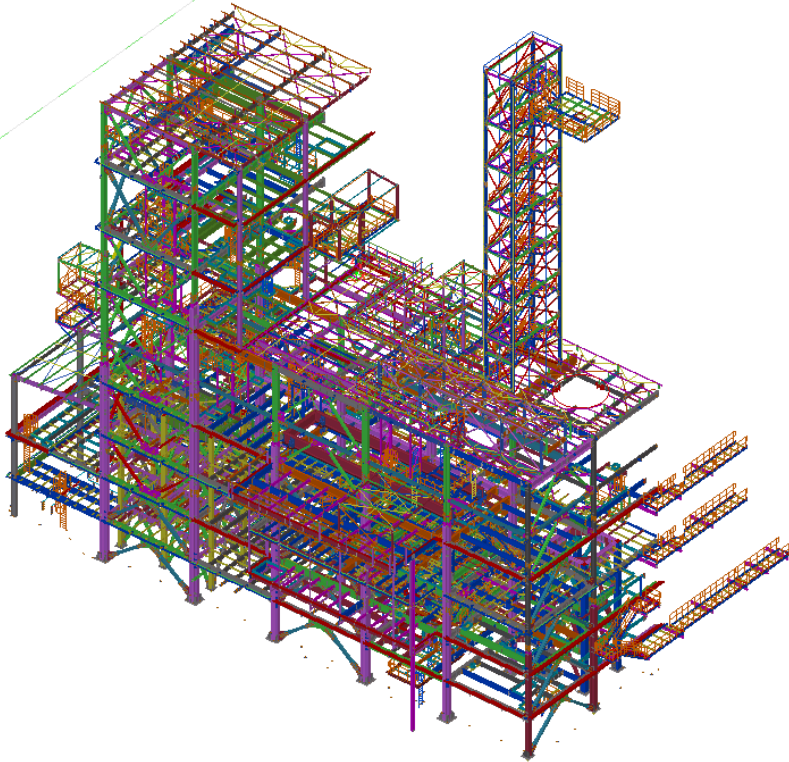
3RD BRIDGE OF BOSPHORUS ISTANBUL-TURKEY

Customer: HYUNDAI & SK JV
YEAR : 2014, 1250 tons



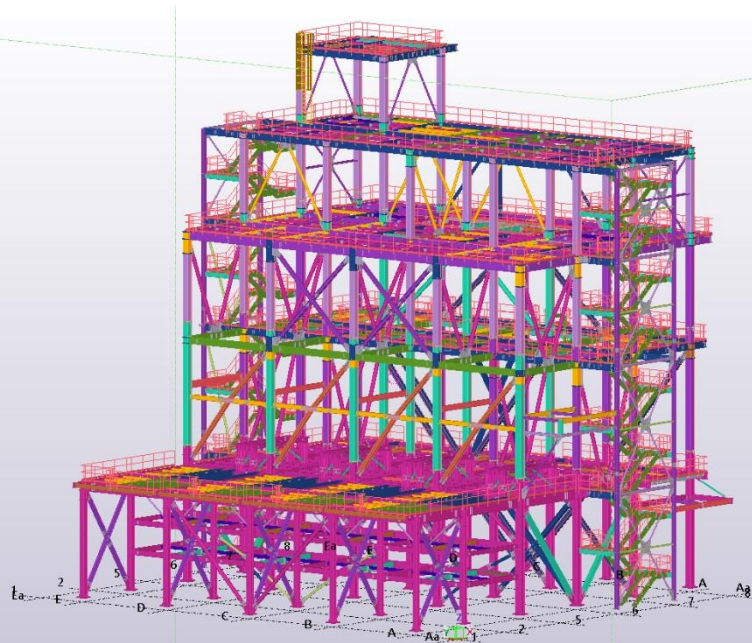
SASA FIBER PLANT ADANA-TURKEY

Customer: METROPOL İNŞ.
YEAR : 2018-19, 8200 tons



GAS TO GASOLINE PLANT
VOLGA INT.
TURKMENISTAN

Customer: RÖNESANS A.Ş.
YEAR : 2015, 2800 tons

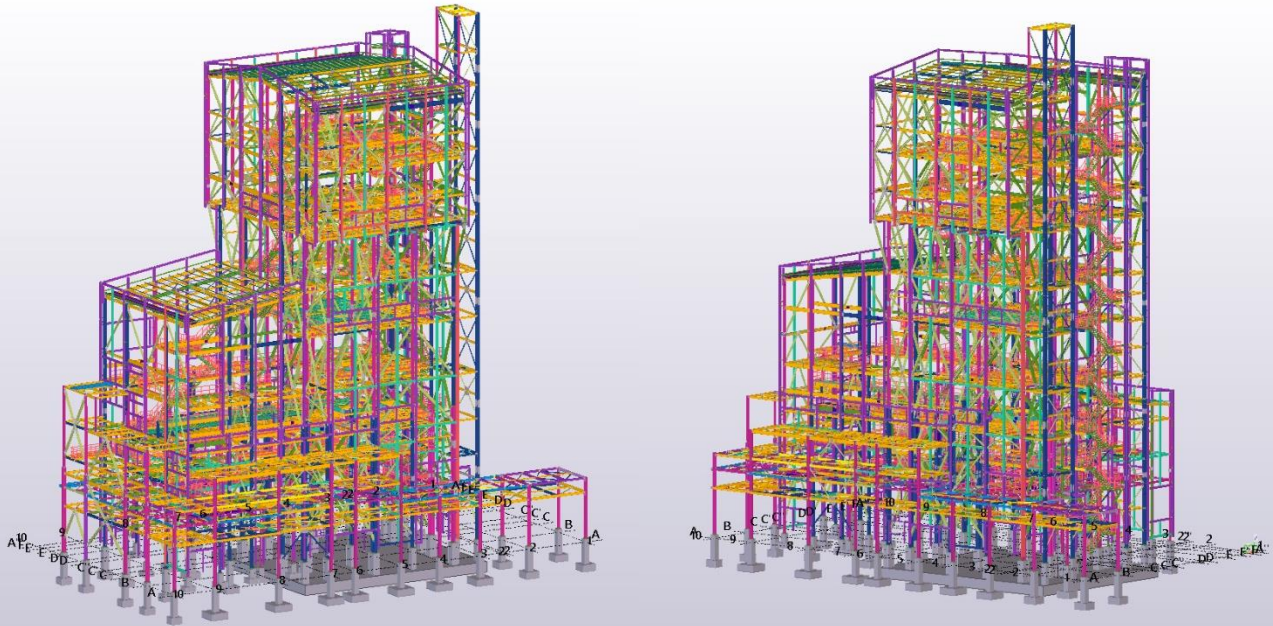


GARABOGAZ FERTILIZER PLANT TURKMENISTAN

Customer: GAP A.Ş.

YEAR : 2015-17,

2500 tons

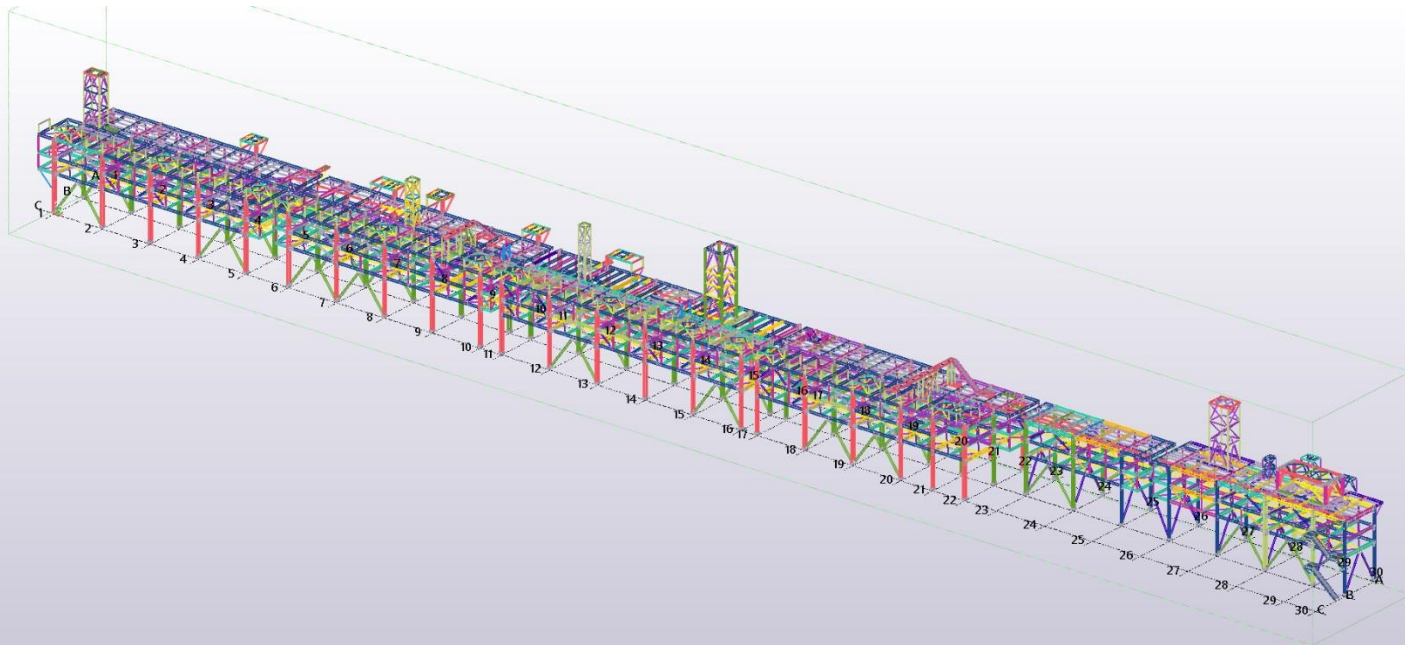


GARABOGAZ FERTILIZER PLANT TURKMENISTAN

Customer: GAP A.Ş.

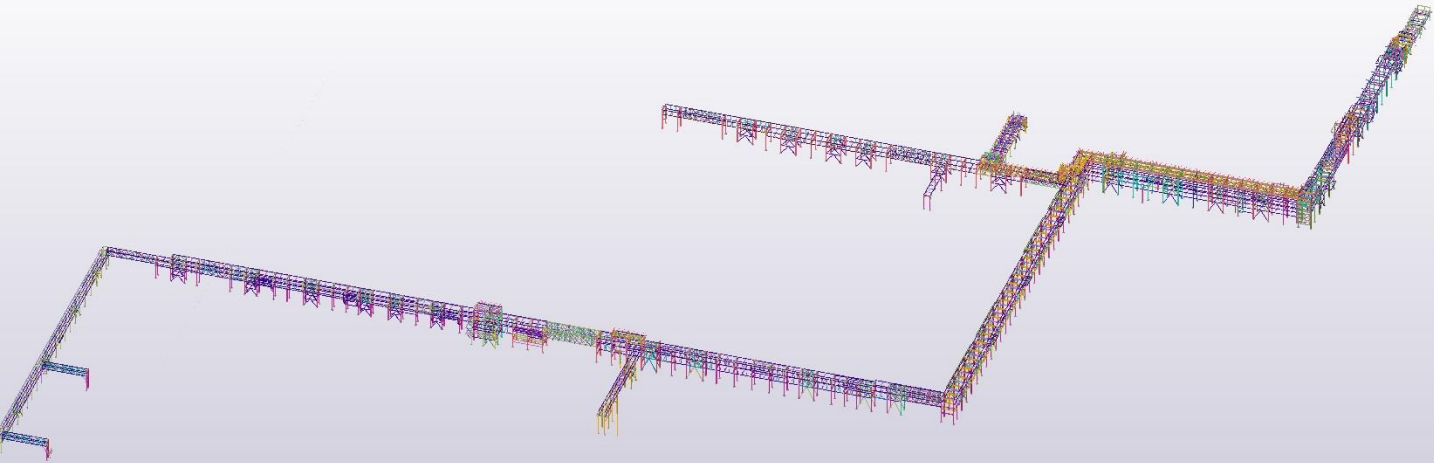
YEAR : 2015-17,

2500 tons



DRAGON OIL TANK FARM TURKMENISTAN

Customer: ILK CONSTRUCTION
YEAR : 2014, 3500 tons





3B Detay Tasarım

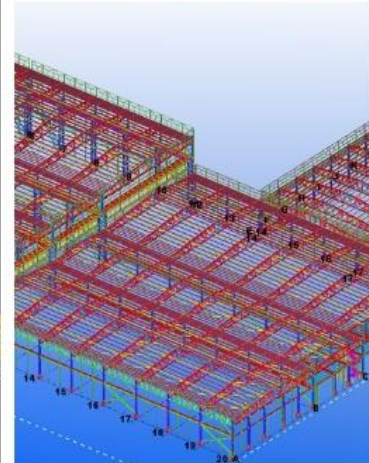
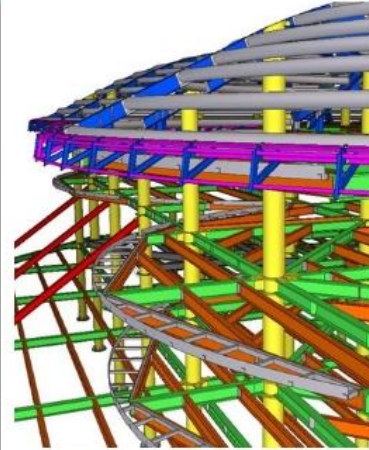
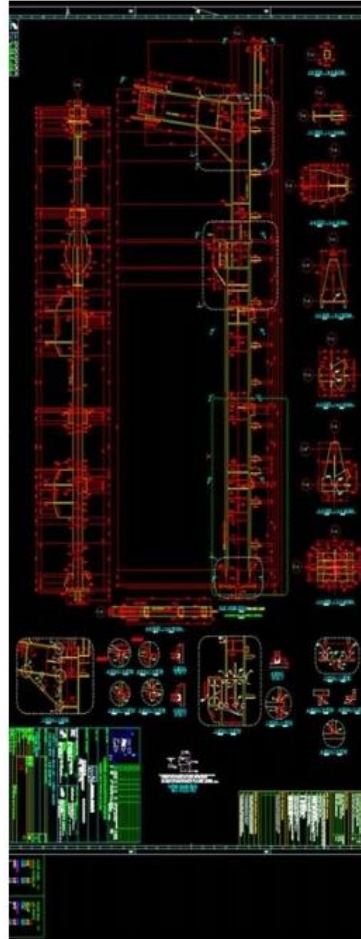
Proje grubu ekibimiz alanında uzman inşaat mühendisleri ve teknik ressamlardan oluşmaktadır. Müşterinin talebi doğrultusunda projelerinin;

- Türk Standartları, DIN standartları ve ASTM Amerikan standartlarına göre hesaplanması ve tasarlanması,
- 3D olarak modellenmesi ve
- imalat ve montaj işleri için gerekli paftaların çizilmesi işlerini tarafımıza iletilen iş programlarına bağlı kalarak gerçekleştirmekteyiz. Bu anlamda firmamız, yenilikçi bakış açısı ile güncel yazılımları takip etmekte ve kullanmaktadır.

3D Detail Design

Our project team consists of civil engineers and draftsmen experienced in their field. Considering Customer's request we are executing their project's

- detail design and calculation works according to Turkish Standards, DIN and ASTM standards, American construction standards,
- 3D modeling works and
- required fabrication shop drawings and erection layout drawing works by adhering to the work schedule submitted to us. In this sense, our company with an innovative perspective keep tracking of the latest software programs for the execution of the works.



Ön İmalat

kumlama ve astar

Malzemenin sertifikaları ile beraber sahamıza indirilmesinden ve kalite kontrol departmanınca uygunluğunun onaylanmasından sonra, iş sırasına göre belirlenen profil ve plakalar sırasıyla kumlama ve shop-primer makinasından geçirilir. Tesisimizde uygulanan standart üretime göre malzemelere;

S.A. 2.5 kalite kumlanması
20-25 mikron shop-primer

uygulanması yapılmaktadır. Bu sayede üzerindeki pas ve kirden arındırılan malzeme kesim yada delme holüne iletilir.

profil/plaka kesme ve delme

2010 yılı itibarı ile Dilovası Tesisimize yaptığımız makina yatırımı ile bugün 3D modelden aldığı veri ile nokta atışı yaparak hatasız otomatik profil ve plaka kesme ve delme işlemlerini çok daha kısa sürede ve çok daha verimli bir şekilde yapılabilmektedir.



Pre-assembly

sand blasting and shop primer

After approval of the raw material checked with the certification by QA/QC, profiles and metal sheets determined with the work sequence will be transmitted to sand blasting machine and shop-primer machine. According to Doralp Quality Standards, if not requested otherwise, to all materials;

S.A. 2.5 quality sandblasting
20-25 microns shop-primer

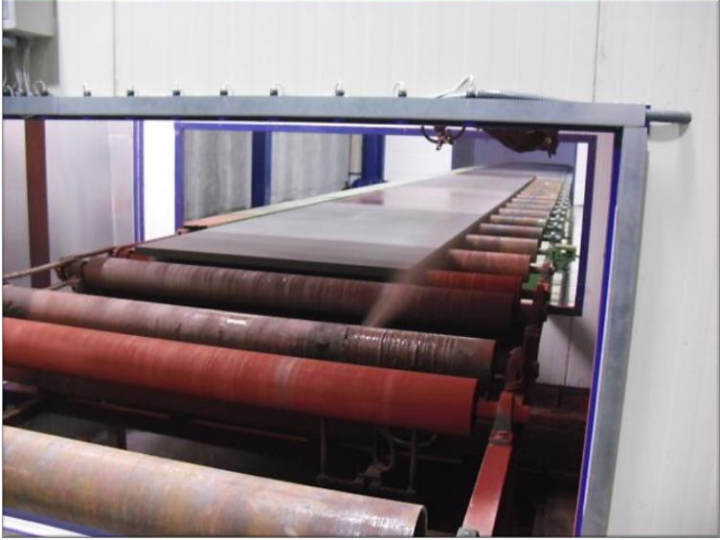
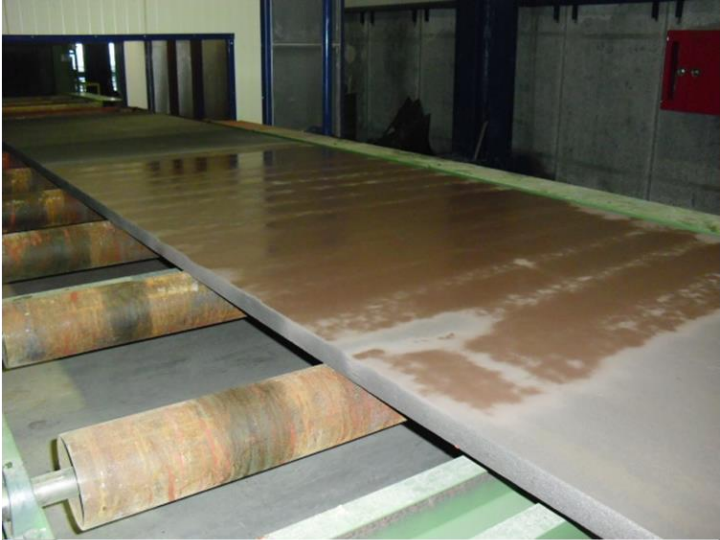
will be applied. After removing rust and dirt of its surface by this method material is ready for cutting and drilling.

profiles/plates cutting and drilling

Since 2010, with the machine investment we made our Dilovası facility, today with the data it receives from 3D model point shot, accurate automatic profile and plate cutting and drilling operations can be maintained more efficient in a much shorter time.









İmalat

çatım

Kesim işlemi tamamlanan pozlar ait oldukları elemanların imalat paftalarına bakılarak bir araya getirilir. Bu işleme "çatım" denir. Kaynak ağızları açılan ve puntolanarak çatılan pozların kaynak öncesinde ölçü ve açılı kontrolleri yapılır. Kalite kontrol departmanımızca raporlanır.

kaynak

Hadromuzda 3 adet kaynak mühendisimiz Kalite Kontrol Departmanı içerisinde çalışmaktadır. Atölyemizde kaynak mühendislerimizin yönlendirme ve kontrolü altında çalışan 32 adet EN ve ASTM standartlarına uygun sertifikalı kaynakçımız vardır. Tesisimizde gazaltı, tozaltı ve elektrodlu kaynak işlemleri Dorarp Kalite Planı'na uygun olarak gerçekleştirilmektedir.

temizlik & boya

Boya öncesi yüzeyin pürüzlenmesi ve kaynak sonrası malzeme üzerinde kalan çapakların temizlenmesi işlemleri bu esnada yapılır.

Projedeki teknik şartnameye uygun uygulama sistemine göre C3-C4-C5 kategori Jotun / Hempel / Akzonobel-International marka boyaları uygulamaktayız. Üretim atölyemizden ayrı 1500 m²lik boyama holümüzde, bilhassa kış mevsiminde kullanılmak üzere 2 ayrı kurutma fırını bulunmaktadır. Bu holdeki imalatlar kuru film kalınlıklarının kontrolü yapıp uygunluğu onaylandıktan sonra sevke hazırdırlar.

Manufacturing

assembly

Acc to the shopdrawings cutted poses are to be assembled. Before welding all measurements will be cecked and reported by QA/QC responsables.

welding

In our facility all arc, submerged arc and electrode welding will be done acc to Dorarp Quality Standards by qualified welders all EN and ASTM certified under control of our three welding engineers from QA/QC department.

cleaning & painting

Cleaning is the phase for surface preparation of the goods where it is damage by welding.

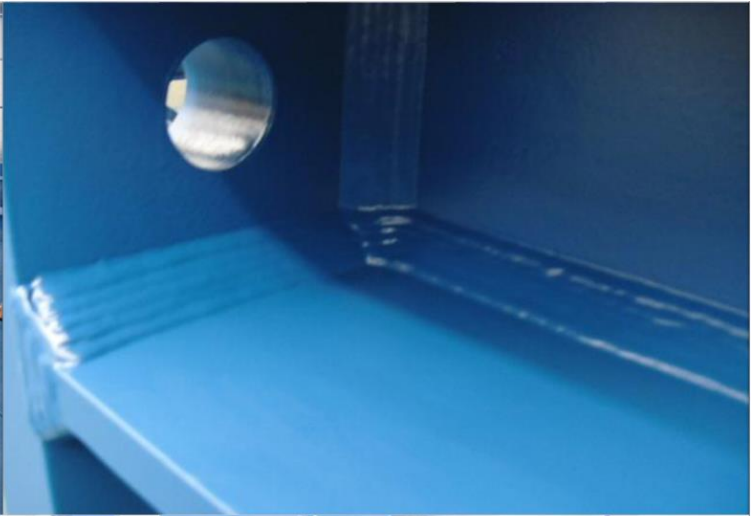
Acc to the requerements of the projects technical specifications C3-C4-C5 category painting material of Jotun / Hempel / Akzonobel-International brands will be applied. In our painting hole separated from the workshop area with 1500 m² area, there are 2 drying oven to be used especially during winter time. The painted goods here are ready for shipping after approval of the dry-thickness control.















Saha montaj

Şantiyelerde işin yapılması için gerekli montaj ekipmanları tarafımızdan tedarik edilmekte, 4 adet 30 tonluk ve 1 adet 60 tonluk vinçler ile 2 adet sepet şantiyelerimizde montaj işlerinin yapılmasında kullanılmaktadır. Montajda çalışan elemanlarımızın sağlığı ve iş güvenliği ile her türlü emniyetli çalışması tedbirlerinin alınması ve sorumluluğu tarafımızdan sağlanmaktadır.

Site- Erection

All necessary equipment for erection on construction site is in our responsibility. Our own 4 cranes of 30 tons, 1 crane of 60 tons and the cherry-pickers are to be used in our construction sites. Health and safety of our employees working on site and of all kind of measures for safe operations to be taken is our responsibility and are to be provided by us.









Akxa Bolu Power Plant



Meta Manisa



Bandirma CCPP



Samsun OMV CCPP



Samsun OMV CCPP



Reka Oil Plant



Reka Oil Plant



Novartis



Novartis



FritoLay Mersin



Tiryaki Mersin



MMC Dudullu



RZK Dilovasi



Protector & Gamble



REKA Oil Plant

YSS Boğaz Köprüsü



Gare de Mons



Senegal Ter Dakar

**Bizi takip
edebilirsiniz**

**websitemiz:
www.doralp.com.tr**

**Facebook:
DoralpÇelikKonstrüksiyon
@doralptekmon**

Instagram: @doralpcelik